



# the TRAVELER



Volume 23-4

April 2026

P.O. Box 812, Cantonment, FL 32533



## St. Augustine Classic Car Museum

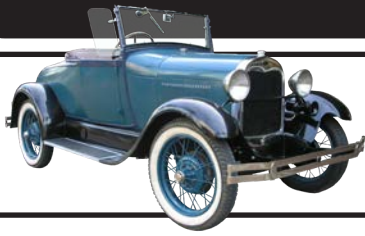
Hope and I recently spent an afternoon at the Classic Car Museum in St. Augustine, and it was well worth the visit. Conveniently located on US-1 South just minutes from historic downtown, the

museum sits on several well-maintained acres and regularly hosts car meets and enthusiast events.

The property features a spacious event venue and an exceptionally clean,

thoughtfully curated showroom. Inside, the collection goes beyond just automobiles. Vintage signage, restored fuel pumps, and era-

Continued on page 3



# Our Club



GCMAC Officers	Name	Phone	Email
President	Allen Braddy	678-499-3370	alnbraddy@yahoo.com
Vice President	Charlotte Dahlenburg	256-783-2261	waltermern@aol.com
Secretary	Kathy McNamara	251-421-6012	realracegril1@gmail.com
Treasurer	Becky Baisden	850-384-5717	beckyb0814@att.net
Newsletter Editor	Charlotte Dahlenburg	256-783-2261	realracegril1@gmail.com
National Rep	Allen Braddy	678-499-3370	alnbraddy@yahoo.com
Webmaster	Becky Baisden	850-384-5717	beckyb0814@att.net
Event Coordinator	Allen Braddy	678-499-3370	alnbraddy@yahoo.com
Club Care	Nancy Pampel	251-979-3251	nancyjpampel@gmail.com

## April

### Birthdays

- 6 Bunny Cummins
- 21 Myong Moore
- 24 Ron Cummins
- 24 Marilyn Manning
- 26 Lee Stepney
- 28 Ron Persons
- 28 Nancy Pampel
- 29 Ricky Stokes



### Anniversary

- 29 Carl & Maria Whaley



Greetings and Spring welcome.

As the days grow warmer and the flowers begin to bloom, I am delighted to welcome you all to another vibrant Spring season with our club. Spring is a time of renewal and fresh starts, and I'm excited to look ahead at all we will accomplish together in the coming months.

We have some wonderful events lined up this season and I hope you'll join us in making them memorable!

- Pensacola Civitan Club Picnic: Mark your calendars for April 11, 11am at Seville Square in Pensacola. We'll gather on the square to exhibit our Model A's for the Special Needs luncheon.
- Model A & T Swap Meet: This event returns on May 1 & 2. Volunteers are needed to run the concessions, and we need your help to serve our members and guests. If you can spare a few hours to volunteer at the concessions stand, please let us know by contacting Charlotte or myself. Your help makes these events possible and enjoyable for everyone.
- Club Picnic/Business meeting: June 13, 10:30am at Garrett Park in Robertsdale, AL. Join us for great foods and conversations.

I also want to share some personal news. After thoughtful consideration, I have decided to step down as Club President at the end of this year due to Sabine's health issues. It has been a privilege serving in this role, and I am deeply grateful for the trust and support you have shown me throughout my term.

Thank you all for your dedication, energy, and friendship. Our club's strength comes from each member's involvement, and I encourage you to continue your active participation and consider stepping into leadership roles in the future. Together, we can ensure our club remains a welcoming, energetic, and positive place for all.

Wishing you a joyful Spring and looking forward to seeing you at our upcoming events!

With gratitude,

*Allen*



# Club Happenings

correct memorabilia create an immersive atmosphere that feels authentic rather than staged.

A significant portion of the collection highlights Ford Model A vehicles, displayed in impressive condition, alongside a variety of other makes that round out the experience. One standout piece was a documented Chevrolet factory-built ambulance wagon, remarkably preserved with very low mileage and period “Radio Dispatched”

markings — a true piece of rolling history.

Personally, one of my favorites was a beautifully restored Jeep FC. Its forward-control design and unmistakable stance made it a highlight of the visit.

Admission is a very reasonable \$16, and children under 12 are admitted free, making it an accessible outing for enthusiasts and families alike.

If you appreciate well-preserved classics, authentic memorabilia, and a relaxed



setting to enjoy automotive history, the St. Augustine Classic Car Museum deserves a spot on your list.

- Scott Lunsford

## Model A and Model T Tour

The week of February 22–28, 2026, brought a special kind of charm to Moultrie, Georgia, as a lively group of vintage car enthusiasts rolled into town. By Sunday afternoon, the parking lot of the Hampton Inn had transformed into a scene from another era, with 35 beautifully

preserved cars lined up. Among them were four proud Model Ts, a rare sight even in a group devoted to early automobiles.

As the tour officially kicked off on Monday, the caravan of classic cars set out each day, turning heads and sparking smiles wherever they went. But one of the most memorable moments of the week came during a special visit to Legacy Village Assisted Living Center.

There, the group wasn't just showing cars, they were sharing history. Residents and staff gathered with excitement as the vintage vehicles pulled in, their polished fenders gleaming in the Georgia sun.

Thanks to the thoughtful planning of tour director Phil Williams, the day unfolded seamlessly, creating an

experience that went far beyond a typical car show. It was about community, nostalgia, and the shared appreciation of a bygone era.

As the week came to a close and the cars prepared to head home on Saturday, one thing was certain—this tour wasn't just about the journey on the road, but the smiles created along the way.

- Bob Skrob



# Entertainment

Email to  
Joe Allen Braddy  
alnbraddy  
@yahoo.com

Submission  
date is the  
20th of each  
month

## Car Shows, Events, Cruise Ins & More

### Model A Facebook:

Private, by invitation only, Facebook group, "Todays Model A." This is for members-only group. Interested in joining the group, contact Scott.

### Club Activities:

#### Monthly

**Club Breakfast in Pensacola  
May 2 8:30 am**

Golden Corral 2260 Langley Ave, Pensacola, FL

#### May

**1-2 8am-3pm**

**GCMAC Swap Meet**

2206 La Vista Ave,  
Pensacola, FL

Concessions are funded and run by the club

#### June

**13 10:30am-2pm**

**GCMAC Picnic and Meeting**

Garrett Park. 18080  
Pennsylvania St, Robertsdale

#### September

**19 11am**

**GCMAC Quarterly Meeting**

Baldwin County Heritage  
Museum, 25521 US-98 Elberta  
Drive your Model A's club  
photo and more!

### MAFCA Activities:

#### May

**1-2 8am-3pm**

**GCMAC Swap Meet**

2206 La Vista Ave,  
Pensacola, FL

#### May

**31- June 7**

**2026 MAFCA National**

**Convention** – Pendleton,  
Oregon

#### September

**10-17**

**Model A Days**

### Regional Activities:

#### April

**11 & 12 Strawberry**

**Festival Open Car Show**

98 Municipal Park Loxley.  
Saturday 9-4 Judged show.  
Sunday 10-3 Top 20

**11 Civitans Picnic Car**

**Display** 11 am Seville Square,  
311 E Governments Street  
Pensacola.

#### May

**23 24th Silverhill Memorial**

**Car Show** 8-3pm Highway

104, Silverhill, Al. \$30  
Registration

#### July

**25 SEMCC Tillmans Corner**

**Kids Day Car Display** 5055

Carol Plantation Rd, Mobile,  
AL 36619

### Meeting Notes:

Members present: Joe & Terry  
Stephens. Mac and Kathy,  
Ron Persons, Bill Chamberlin,  
& myself.

- Events were announced
  - Swap meet May 1 & 2 at PVC on Lavista Ave. Concessions are funded and run by the club. Suggested we keep the same menu as last year. Need to figure out how much we will need.
  - Read the financial report.
  - Club picnic June 13 @ 10:30am at Garrett Park.
  - Our September 19th meeting @ Baldwin Heritage Museum, we ask that everyone drive their Model A's for an updated club photo and the opportunity for the Museum do a little promotion and invite in food trucks. Suggestions made to advertise this on the radio that does free announcements to cover the event.
  - Mentioned club dues.
  - Order your club shirts through carclubshirts.com to allow members to get shirts and stuff with our logo.
  - Allen will not be running for the President for next year due to Sabine's health issues.
- Joe Allen Braddy

## Help Wanted

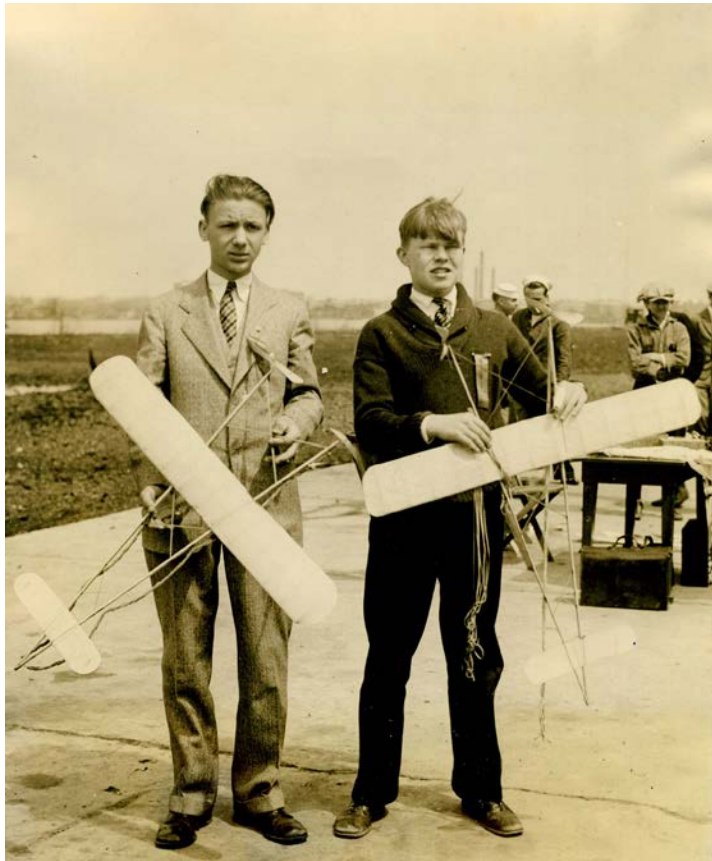
**Car Shows? Car Events?**

**Email to Allen Braddy  
alnbraddy@yahoo.com**





# Era Photos



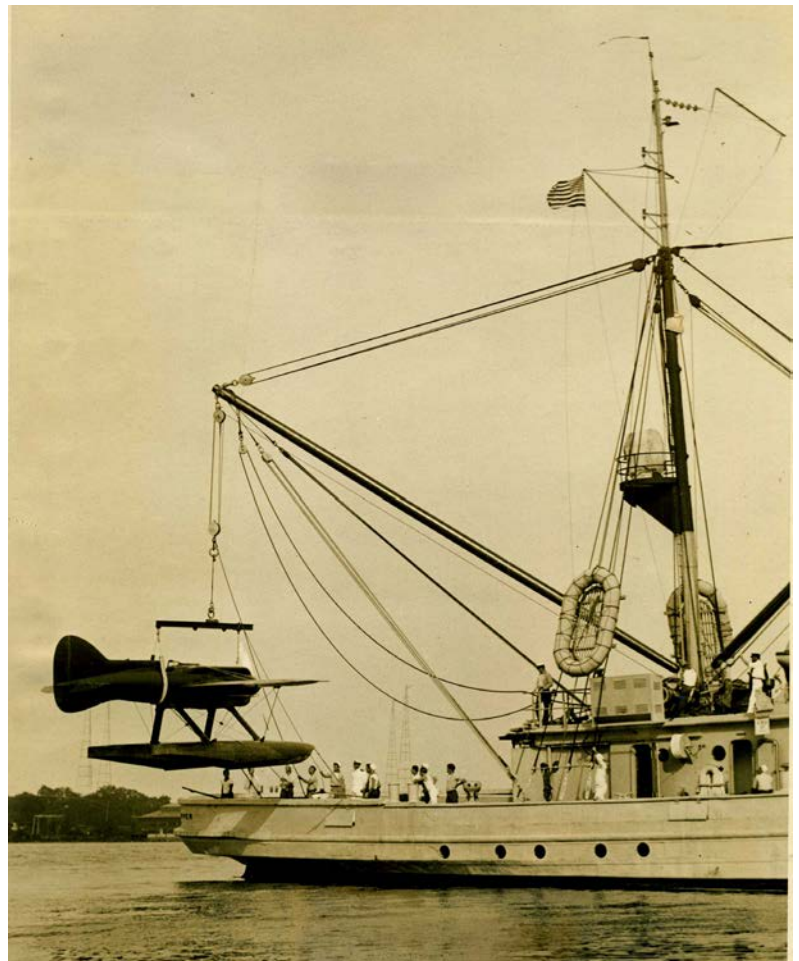
## District of Columbia Has Miniature Airplane Tournament

4-12-28 - The District of Columbia Miniature Aircraft Tournament, officially sanctioned by the National Aeronautic Association of the USA, attracted hundreds of contestants to the US Naval Station at Anacostia today. Two of the winners of today flights are show with their models. On the left is Lloyd Fish, who won the Senior championship with a flight of 118.8. On the right George Deskin, who won the Junior Championship with a flight of 95 seconds.

- Photographer Bill Shrout

## The Mystery Ship

8-8-29 - "The Mystery Ship", which will be flown in the Schneider trophy race in England next month by Lieut. Alfred William, crack Navy pilot, is shown being lowered into the waters of the Severn River at Annapolis before his first speed test. The plan rests on the dock at the Naval Academy and is lowed into the water by a crane on the deck of the Sandpiper, Naval aircraft tender.



# Era Fashions



## Egyptian Enthusiasm

By Mary Carlson

**Pssst...** Have you heard the rumor that the tomb of Queen Nefertiti may have been located? If this report turns out to be true, we can probably expect a resurgence of interest in all things Egyptian. That is what happened in the 1920's after the tomb of King Tutankhamun was found and opened. You may know that the archeologist Howard Carter along with his colleague the 5th Earl of Carnarvon were responsible for this fantastic discovery. Following the opening of the tomb, many Egyptian themed garments and accessories became available. This trend carried on through the Model A era.

During the Model A era, travel to Egypt was promoted. This ad below was in the October 1, 1929 issue of Town and Country magazine. Who doesn't love the romance, health, sports, sunshine, history and antiquities that were offered?

*Romance*

With its days bathed in golden sunlight, its mysterious landscapes at midnight, its wonderful spectacle afterwards which reach the Libyan Hills, the Desert and the Nile with eternal beauty when the sun has set, Egypt is the Land of Romance. The pagentry of its past, the participation of its present, its matchless climate and romantic air make it the ideal winter resort. The comfort of its hotels is renowned all the world over. To visit in the wonderful land of the Pharaohs is an experience which once enjoyed is remembered with fond delight and its magic spell compels a second visit.

Season—October to May

Examine at any Travel Bureau or Tourist Agency for particulars of fares, tariffs, taxes, etc. . . . .

EGYPT

HEALTH - SPORT - SUNSHINE - HISTORY - ANTIQUITIES



Camel brand cigarettes were widely advertised in women's magazines

Color names were influenced by the Egyptian theme – such as Nile green, which was commonly seen in dresses, undergarments and sleep wear. The images shown are from Model A era catalogues.

Daintily feminine And decidedly Smart is this New Hand-Dyed Outfit... Complete Set Consists of Gown and 2-Piece Pajamas \$5.95

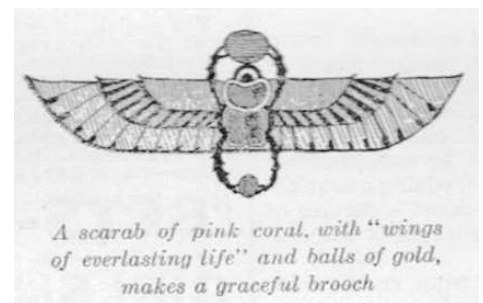
Good Quality RAYON Jersey Gown \$1.98

2-Piece RAYON Pajamas Only \$2.98



These shades of green were all described as Nile green. The variations may be due to printing of the catalogues or the manufacturers.

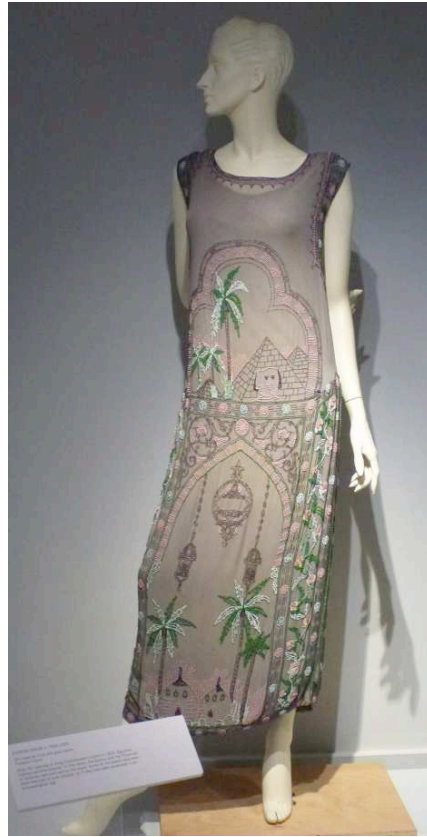
Jewelry was created or recycled from antiquities. Thousands of pieces of relics called scarabs were available, making them affordable for the average person. These bits of carved steatite<sup>1</sup>, carnelian, emerald, lapis-lazuli, ruby or bloodstone are used as brooches, rings or pendants.



The spectacular dress shown here is from the early to mid 1920's, shortly before the Model A era, and clearly shows the Egyptian influence. Note the colors in the dress, the Sphinx and the pyramids. You may remember seeing this garment on a live model during the fashion extravaganza at MAFCA's 2010 International Convention, in Vancouver, Canada.

Note... Downton Abbey fans will know that the television series was filmed at Highclere Castle. Did you know that this was the home of the 5th Earl of Carnarvon, [George Edward Herbert] who was a friend and colleague of the archeologist Howard Carter? A book by The Countess of Carnarvon, titled 'Lady Almina and the Real Downton Abbey'

may interest you.



Sources:

Lady Almina and the Real Downton Abbey by The Countess of Carnarvon Needlecraft magazine of June 1929

Needlecraft magazine of August 1930

Town and Country magazine of Oct 1st, 1929 Modern Priscilla magazine of January 1929

Frederick Herrschner Inc catalogue for Spring 1929

National Bellas Hess Co Fall/Winter 1928-1929 catalogue The Mentor World Traveller magazine of January 1931

The fashion extravaganza at the MAFCA 2010 International Convention

'steatite is also known as soapstone

# The Model A Ford Club of America MAFCA

*Serving Model A Ford owners since 1955*



Our award winning magazine "The Restorer"

MAFCA is dedicated to the restoration, preservation and enjoyment of the Ford Model A and AA cars and trucks, as manufactured from 1928 through 1931. We are an active, family-friendly organization whose members share a passion for these historic vehicles, plus other aspects of life in that era, such as fashions.

MAFCA is a not-for-profit corporation with members and local affiliated chapters all over the globe. This makes us the largest car club in the world dedicated to one make of automobile. We hope you enjoy looking through our site, and we invite you to join us!

Membership in Model A Ford Club of America is encouraged. MAFCA Dues are \$50.00 and should be mailed to: MAFCA Headquarters, 250 South Cypress, LaHabra, CA 90631-5586 For more info visit: <https://www.mafca.com/>



Monthly publication of the Gulf Coast Model 'A' Club - Southern Alabama to the Florida Panhandle

## THE TRAVELER



# Tech Tips

## Viton Tip Float Valve

By Tom Endy,  
Westminster, CA

For a number of years I have been fooling with Zenith carburetors and one thing I have discovered is not only the importance of a proper fuel float level, but also the need to have the float valve hold the proper level for an indefinite period of time.

Most original style float valves (original or reproduction) will not hold the float level indefinitely. They rely on the tank shut off valve for a positive shut off when parking the car, and most tank valves do not shut off 100%. The result is fuel dripping from the carburetor because the fuel level in the reservoir was able to rise due to the float valve not holding and it rose over the top of the main and cap jets and dripped out on the ground, or onto the garage floor.

A number of years ago the Model A Kingdom was introduced to the Viton tip float valve. The valve tip has a rubber-like material that will provide a positive 100% shut off and will hold the float level indefinitely. Most suppliers now carry them.

However, there is a quality problem with the manufacturing process of the Viton tip float valves on the market.

A number of years ago I bought my first Viton tip float



The valve comes apart by prying the small round washer at right out of a recess just inside the valve housing where the two holes are shown. There are actually four holes. A small jeweler's screwdriver works well. If the washer ever becomes deformed and restricts the valve it can be replaced with fine SS safety wire looped through the holes and twisted; one loop for each pair of holes.

valve from Bratton's Antique Auto, and it leaked like a sieve. It was easy enough to take it apart and I found it loaded with brass machining chips. Brass chips were even imbedded in the Viton tip rubber-like material. Once I cleaned all the brass chips out of the valve it worked perfectly.

I ordered several more valves from Bratton's and took them apart before I used them. These were also full of brass chips. I called and spoke to Walt Bratton. If you have ever done business with Walt you have probably discovered that he is very responsive. Suppliers like Walt are at the mercy of their suppliers. Walt contacted the supplier of the Viton tip float valves and explained the

problem to them.

The next batch of Viton tip float valves I purchased from Bratton's showed a 90% improvement in quality in that there were only a few brass chips inside the valve.

Since then I always take new Viton tip float valves apart and inspect them for brass chips with a jeweler's loop before installing them and when I find brass chips I clean them out.

The last batch I ordered from Walt had more than the normal amount of brass chips in the valve. There were also brass burrs hanging off the four holes ready to break off and drop into the reservoir. Once again I called Walt and advised him that his supplier had reverted back to square one.

One of the things I have learned about the Model A hobby is that the Hallmark of reproduction parts is not quality. The sad thing is that once a quality problem is identified and corrected, it does not always stay that way. Henry would have had a fit.

The moral to this story is that a Viton tip float valve from any supplier is something worthwhile installing in your Zenith. They probably all come from the same manufacturer regardless of which retail supplier you buy them from. Best to take it apart before you install it and clean out any brass chips you might find lurking inside.



## At the Border of Hope: A Dust Bowl Family's Journey

*Historical Image Facebook page, post about migrant families at a 1935 state border inspection station (date accessed March 2026) Face Boock Page. Photo Credits: by Dorothea Lange, Farm Security Administration, Library of Congress*

For the migrant families of the 1930s, state borders were more than just lines on a map; they were formidable barriers that could mean the difference between a new beginning and a bitter return. This 1935 photograph captures a weary

family in an old, dusty truck as they are stopped at a state border inspection point. A uniformed officer stands by the driver's side, his presence a stark reminder of the skepticism and often hostility that greeted those fleeing the





Dust Bowl and the failing citrus groves of the South. The truck is a mountain of mattresses, furniture, and tin buckets, a tangible record of a life packed into a few square feet of space.

The border inspection was a moment of intense anxiety. Families were often questioned about their resources, their health, and their intentions. Some states even attempted to turn back those they deemed “indigent,” leading to the creation of “bum blockades.” This image captures the tension in the father’s face and the quiet observation of the children peering from the back of the truck. It is a study in the resilience required to face not just the elements, but the social and political challenges of the era. The warm tint and historical filter of the photograph evoke the atmosphere of a hot, dusty afternoon on the edge of a new territory. It is a tribute to the

courage of those who, despite the uncertainty and the unwelcoming gaze of authority, continued to push forward in search of a better life. The border was a test of their resolve, a hurdle to be cleared on the long road to hope.



## THE TRAVELER

Monthly publication of the Gulf Coast Model 'A' Club - Southern Alabama to the Florida Panhandle



Model A &  
Model T Fords!



# Gulf Coast Model A Club SWAP MEET

Friday & Saturday May 1st & 2nd  
8:00 am - 3:00 pm

Join fellow enthusiasts to buy sell & trade at the home of

**Model A Ford Vintage Parts**

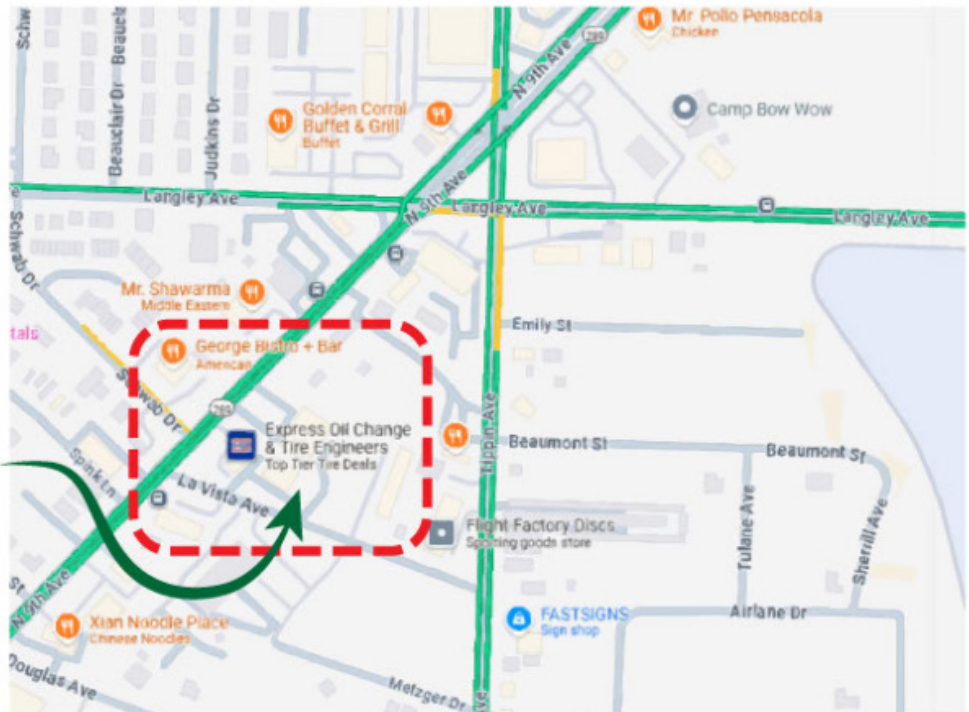
2206 La Vista Ave Pensacola FL 32504

For more information contact:

Ricky Stokes  
850-712-4486  
crstokes21@gmail.com

Allen Braddy  
678-499-3370  
alnbraddy@yahoo.com

Event Site  
**Model A Ford Vintage Parts**  
2206 La Vista Ave  
Pensacola FL 32504



Concessions Available



## Vendor Registration \$25

Due by 04/17/2026 \* Make checks payable to Gulf Coast Model A Club

Email to [alnbraddy@yahoo.com](mailto:alnbraddy@yahoo.com) or mail to 2206 La Vista Ave Pensacola FL 32504

Name \_\_\_\_\_

Address \_\_\_\_\_

Phone \_\_\_\_\_

Email \_\_\_\_\_

Signature \_\_\_\_\_



# THE TRAVELER

Monthly publication of the Gulf Coast Model 'A' Club - Southern Alabama to the Florida Panhandle

