



Cruisin' Down Memory Lane: Gulf Coast Model A Club Brings Joy to Azalea Trace Residents

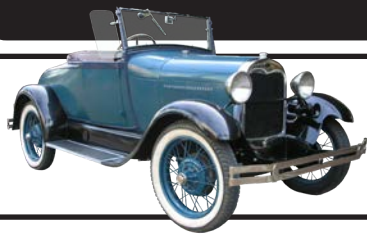
There's something about the sight of a classic Ford Model A that seems to open a door to the past. On April 5, residents of the Azalea Trace Retirement Community in Pensacola were treated to a special visit from the Gulf Coast Model A Club (GCMAC), and the result was

nothing short of heartwarming.

The club set up a charming exhibit featuring vintage Model A cars, inviting residents to take a trip down memory lane. Four dedicated GCMAC

Continued on page 3





Our Club



GCMAC Officers	Name	Phone	Email
President	Allen Braddy	678-499-3370	alnbraddy@yahoo.com
Vice President	Martha Fuller	251-602-1931	waltermern@aol.com
Secretary	Kathy McNamara	251-421-6012	mrhobbs456@aol.com
Treasurer	Becky Baisden	850-384-5717	beckyb0814@att.net
Newsletter Editor	Charlotte Dahlenburg	256-783-2261	realracegril1@gmail.com
National Rep	Allen Braddy	678-499-3370	alnbraddy@yahoo.com
Webmaster	Becky Baisden	850-384-5717	beckyb0814@att.net
Event Coordinator	Allen Braddy	678-499-3370	alnbraddy@yahoo.com



May Birthdays

MAY
11 Allen Braddy

Anniversaries

16 Ron & Bunny Cummins
17 Paula & Gator Gould
28 Ray & Katherine Harper

Message from ...

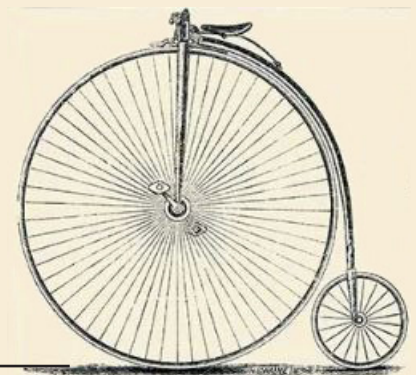
Hello all

I hope all is well. We are entering into the spring activity time of the year which allows for everyone to get outside and enjoy the weather. We hope you get plenty of time to spend with your Model A. We have a lot of events coming up for the club and hope you'll spend some time with us. Events to remember will be the Club Picnic and our 1st Model A & T Swap meet in June. The Quarterly meeting in September at the Baldwin Heritage Museum. We ask you to drive your Model A to that meeting so we can update the Gulf Coast Model A Club's group car photo and help attract attention for the museum.

As we are finalizing the details for the MAFCA National Awards Banquet in December, we're asking for those that are wanting to help, please let Charlotte or myself know what area you would like to support. We're looking forward to bringing the National Members into our region to show them how beautiful the Gulf Coast is.

Thank you

Allen



Club Happenings



members brought their prized automobiles and spent the day swapping stories and sharing smiles with the community.

For many at Azalea Trace, these classic cars were more than just shiny showpieces—they were time machines. Residents gathered around the vehicles, touching the chrome, admiring the details, and, most importantly, reliving cherished moments from their youth. Some recalled learning to drive in similar cars;

others recounted road trips, first dates, and simpler times when a Sunday drive meant everything.

“It’s a joy to watch their eyes sparkle and the smiles on their faces,” one GCMAC member shared. “These cars open up a floodgate of memories. It’s like the past comes roaring back to life—engine and all.”

Events like this go far beyond entertainment—they create meaningful connections



between generations and provide residents with the opportunity to reflect, laugh, and relive some of the best days of their lives.

As the sun shone on the polished hoods of the Model A’s, it wasn’t just a display of automotive history—it was a celebration of stories, nostalgia, and the timeless magic of a well-loved car.





We had our April Club Breakfast and then attended an exhibit at the Azalea Trace Retirement Community set up by Ron and Bunny Cummings. Robin Olsson, Bill Ross, Allen Braddy, Ron & Bunny Cummins showed off their cars for the residents. We spent a few hours answering questions and listening to those who had great memories growing up with these cars. It was a fun day and the weather was perfect. The residents asked for us to return again so we'll get one scheduled for the fall in which we can promote for a larger turn out

THE TRAVELER

Email
Submissions to
realracegrill1
@gmail.com

Classifieds

Submission
date is the
20th of each
month



1931 Model A Coupe For Sale

Not original motor. Includes extra
signal light kit, right side tail light
and cowl lights

George Moore Jr •850-451-7748
•gmoore72@gmail.com



THE TRAVELER

Monthly publication of the Gulf Coast Model 'A' Club - Southern Alabama to the Florida Panhandle



15th Annual Shirley Looney Memorial Car Show

March 29, 2025 had about 70 cars gather in overcast weather to show off. In attendance was Duane McIntyre's 1931 Model 'A' Ford Victoria along with a few slightly newer models.

- Mac McNamara



I took my daughter, granddaughter and her pal for a ride in the Model A. The

girls loved the rumble seat and a good time was had by all. - George Moore Jr



On April 19 Joe & Terry Stephens and Allen Braddy attended the Pensacola Civitans Clubs annual picnic at Seville Square for the special needs students in the community. They allowed the students and their families to come by and ask questions and enjoy the cars. - Allen



THE TRAVELER

Monthly publication of the Gulf Coast Model 'A' Club - Southern Alabama to the Florida Panhandle



Email to
Joe Allen Braddy
alnbraddy
@yahoo.com

Entertainment

Submission
date is the
20th of each
month

Car Shows, Events, Cruise Ins & More

Model A Facebook:

Private, by invitation only, Facebook group, "Today's Model A." This is for members-only group. Interested in joining the group, contact Scott.

Club Activities:

Monthly

Club Breakfast in Pensacola
May 3 8:30 am

Golden Corral 2260 Langley Ave, Pensacola

June

14 11am-2pm

GCMAC Picnic and Meeting
Garrett Park. 18080
Pennsylvania St, Robertsdale

28 8am-3pm

GCMAC Swap Meet

2206 La Vista Ave,
Pensacola, FL

September

20 11am

GCMAC Quarterly Meeting

Baldwin County Heritage
Museum, 25521 US-98 Elberta

December

3-6 National Awards

Banquet Hosted by GCMAC

in Mobile. Must Preregister

for events and be a member
of MAFCA to participate.

Non MAFCA members can
volunteer to help with various
jobs to make the event happen.

MAFCA Activities:

May

Model A Youth Month

23-25

**2025 Northern California
Regional Group Roundup –**
Sacramento, California

June

11-14

**67th Annual Car Show and
Swap Meet on Petit Jean
Mountain** (2025 Feature Car
Model A) Morrilton, Arkansas
12

62nd Texas Tour – Giddings,
Texas

12-25

2025 National Tour – Virginia

August

15

Model A Ford Swap Meet
Thompson GA

September

13 All day

INTERNATIONAL MODEL A

FORD DAY – Worldwide

Sept.22-Oct. 13, 2025

Route 66 Tour – United
States

October

31-Nov 2

2025 Florida Model A Day
at the Barberville Pioneer
Settlement, Barberville,
Florida

December

3-6

**2025 MAFCA National
Awards Banquet –** Mobile,
Alabama

Regional Activities:

May

3 9am-3pm.

10th Bugs on the Bayou,
Mullet Festival Grounds,
Hwy 85 & E. College Blvd.,
Niceville, FL

24 8am-4pm.

**23rd Silverhill Memorial Car
Show,** Town Park Square,
Hwy 104 @ Co. Rd. 55,
Silverhill, AL

24 7am-4pm

**2nd Grand Bay Food Truck
Festival & 1st Car Show**

Bonnie Farms 7901 Grand
Bay Wilmer Rd. Grand Bay

June

**20-21 Mobile Bay Street
Rod Nationals,** The Grounds
Mobile AL

September

**13-14 7th Annual Car,
Truck and Bike Show,** Mullet
Festival Grounds Niceville, FL



Help Wanted

Car Shows? Car Events?

Email to Allen Braddy

alnbraddy@yahoo.com





Era Fashions



A Stitch in Time...

Diann Eason, Era Fashion Committee Model A Ford Club of Colorado

Fancy handwork and stitching has adorned fashion since the Scythian culture estimated to be from the 5th to 3rd centuries BC. The T'ang (618-967 AC) and the Ch'ing dynasty (1644-1911 AC) displayed elaborately decorated on garments with embroidery.

During the Victorian era (1830-1890), beautiful stitching was a symbol of a person's class and wealth. Collars, sleeves, and those bell-shaped floor-length skirts were brought to life with a third dimension of stitching, applique', and stump work or raised work.

The Edwardian era of fashion (1900-1910) also showed fancy stitching as a sign of elegance and

a strict social rule worn by only the wealthy.

The Industrial Revolution resulted in the development of commercial sewing and weaving machines. The mass production of textiles, fabric and yarns opened up the markets to a larger section of the population at a cheaper cost and in a faster time. The average person had access to more elaborate fabrics for showing off their handwork and stitching skills.

During the Great Depression of 1929, purchasing commercially produced garments was less likely due to cost, lack of employment, and/or the closing of garment manufacturers. Hand stitching skills, often passed down from one generation to another were put to use. Color, texture, and style could be added to a drab house dress or hat to transform it to a dress suitable for a public outing.



1931 Delineator May 1931

During the Model A Era, hand stitching was seen mostly on women's and children's clothes. Many household items were also decorated with hand stitching. Stitching designs were the result of creative artisans using thread made of cotton, silk, wool, and even linen. Model A Era stitchers used various stitching techniques to add charm, glamor, elegance, and an element of desirability to their garments.

Embroidery is the use of thread to develop a design on fabric. A single color matching the fabric may be used or multiple colors to make the design come alive. Beads and sequins were incorporated with the embroidery to enhance the design, to add glamor, or to show off the stitching skill. Crystal beads were added to clothing and decorative items. Check out The



Frederick Herrschner 1928



Frederick Herrschner 1928



Pictorial Patterns June

Book of Crystal Flowers, 1st Edition
by Hiawatha, Dritz-Traun Company,
NY 1929

Stump work is a three-dimensional stitching. The technique uses various thicknesses of threads to give different height of the embroidery. Animals, birds, and plants were common subjects. Many hats were designed



Sears Robuck Catalogue 1930

with felt stump work on crown and brim.

Trapunto is the art of creating raised designs of flowers, geometric designs and arches using batting under the flat fabric. Trapunto could be a smart stitching dimension on woman's suit lapels, necklines, hats and cuffs of a daytime dress.

Patchwork is the technique of joining pieces of fabric together with decorative embroidery stitches.

Applique' is the process of layering a fabric design on a foundation fabric with raw edges covered by thread of the same color to finish it. This technique lends itself to children's clothes, a young woman's afternoon dress, sporting attire, and some lingerie. The photo to the left shows a child's cotton suit has a cute rabbit for summer fun.



Pictorial Patterns June 1930

Silk ribbon embroidery results in an elegant spray of flowers, animals or an artistic design using silk ribbon instead of thread. Greater space is covered in a shorter time with this technique. Women's undergarments as well as wedding attire would have

this fancy style of stitching.



Example of Silk Ribbon Embroidery

Tatting is lace made with a small hand shuttle, thread, and skillful hands. This type of lace could be used on cuffs, collars, and afternoon dresses. Household items such as pillowcases and handkerchiefs were often treasured if they had tatting. In the photo to the left, the black dress with the white bertha collar has delicate tatting as lace around the collar and cuffs.



Sear's Catalogue 1930

Picot edging appeared on summer frocks of sheer fabric requiring a fine edging, as did many pieces of

alluring lingerie. The hemlines of the summer frocks in the photo have a picot edging, done on a commercial machine.



Delineator January 1931

When you are working on a new garment add your own creativity. Add some contrasting color with a design, be bold to make a statement of your skill, make your Era Image garment worthy,

References

1. Amoroso, C. (2007), Needlework Through History: An Encyclopedia, Greenwood Publishing Group
2. Charles & Elin (2019) History of Embroidery and Its Rise in Popularity, <https://www.charlesandelin.com/history-of-embroidery-modern-art-form/>
3. Mullor, S. and Schuette, M. (1964) The Art of Embroidery translated by Donald King, London, Thames & Hudson Publishers
4. Van

Niekerk, D. (2006) A Perfect World in Ribbon Embroidery and Stumpwork, Chicago, Midpoint Trade Books Inc

5. Trinder, B. (2013) Britain's Industrial Revolution (Making of a Manufacturing People), Lancaster United Kingdom, Carnegie House Publishers



The Model A Ford Club of America MAFCA

Serving Model A Ford owners since 1955



Our award winning magazine "The Restorer"

MAFCA is dedicated to the restoration, preservation and enjoyment of the Ford Model A and AA cars and trucks, as manufactured from 1928 through 1931. We are an active, family-friendly organization whose members share a passion for these historic vehicles, plus other aspects of life in that era, such as fashions.

MAFCA is a not-for-profit corporation with members and local affiliated chapters all over the globe. This makes us the largest car club in the world dedicated to one make of automobile. We hope you enjoy looking through our site, and we invite you to join us! Membership in Model A Ford Club of America is encouraged. MAFCA Dues are \$50.00 and should be mailed to: MAFCA Headquarters, 250 South Cypress, LaHabra, CA 90631-5586 For more info visit: <https://www.mafca.com/>



THE TRAVELER

Monthly publication of the Gulf Coast Model 'A' Club - Southern Alabama to the Florida Panhandle



Tech Tips

Head Gaskets

By Tom Endy,
Westminster, CA

The FelPro Company has for many years manufactured the better quality head gaskets for a Model A Ford. The part number is 7013. Most of the major suppliers carry it under their own part number and don't necessarily tell you in their catalog that the gasket is a FelPro. Bratton's carry it under their part number 8070 (\$19.00) and they do identify it as a FelPro. You can also order one under the FelPro part number from any Napa store.

The FelPro 7013 is copper clad on each side with asbestos looking material sandwiched in between.

A number of years ago FelPro offered the 7013 with several different dash numbers to accommodate different applications. The 7013-1 was for use with an engine with a standard bore and up to .080 over, I believe. If there was a 7013-2, I do not know what the application was for and I have never seen one. The 7013-3 is for use with an engine bored .100 or more over. The difference is that the gasket has the piston openings at a larger diameter. This feature makes for very narrow gasket material

in the area between the #1 and #2 pistons and the #3 and #4 pistons. A blown head gasket is a common occurrence in these two areas.

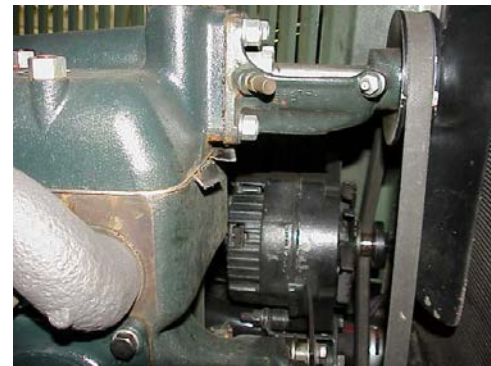
As the Model A came out of common use there was less demand for head gaskets and suppliers and the manufacturer determined that the FelPro 7013-3 would suffice for any application. Therefore the -3 is all that is available today and they have a -3 stamped in the upper left corner of the gasket.

I recently acquired an old stock FelPro 7013-1 that I intend to use on an engine that is bored .020 over. The area between the cylinders is noticeably wider and hopefully better able to withstand blowing out in these areas.

In recent years another head gasket for the Model A has come on the market and is referred to as a "modern head gasket". Most of the major suppliers carry it. The price however is considerably higher. A number of people have expressed satisfaction with the performance of the new gasket.

However, I had a bad experience with the one I attempted to use. After about 1,000 miles I noticed the front of the gasket had delaminated and migrated out a full inch and was sticking out under the

water pump. Surprisingly the gasket had not blown and the car still ran good, but when I removed the head it appeared to be just about ready to go.



A "modern head gasket" delaminated and sticking out under the water pump.



FelPro 7013 head gaskets. The gasket on the left is a -1, the arrow points to the area between #3 and #4 cylinders, note how wide the area is. The gasket in the center is a -3, note the area between #3 and #4 cylinders is very narrow. The number -3 is stamped on the gasket. The gasket on the right is a -3 that blew out between #3 and #4 cylinders.



Era Photos

Coolidge Throws Out First Ball Opening 1928 Baseball Season

4-10-28 President Coolidge, who has started a number of big league baseball games in the past, was on hand today to hurl out the first ball of the 1928 season. To the right of the President, is Bucky Harris, youthful manager of the Nationals and Clark Giffith, President of the Washington Ball Club.



Democrats and Republicans Will Battle for Baseball Honors

5-17-28 Representative Thomas S. McMillan, South Carolina, captain of the Democrat nine who will defend their baseball title against the Republican nine at Griffith Stadium, both teams on a sand lot near the Capital Building at Washington, D.C. Representative McMillan played for five years with the Charleston, S.C. baseball club and was leading hitter for the League for three years.

– Photographer Bill Shrout



New York, New York: September 19, 1930 Charles Ray, film star, and Lillian Bond, musical comedy star, playing checkers on the new outdoor, giant board, introduced atop the Hotel Governor Clinton. Ted Barorn, composer, is the referee.

Rooftop Giant Checkers Game

Source: (1)<https://daytoninmanhattan.blogspot.com/2021/11/the-1929-governor-clinton-stewart-hotel.html> (2) Wikipedia

The 1929 Governor Clinton (Stewart) Hotel - 371-377 Seventh Avenue

On April 16, 1928 The New York Times reported that Harris, Forbes & Co. and R. W. Halsey & Co. were offering \$5

million in bonds as the initial financing to erect a hotel at Seventh Avenue and West 31st Street. The article noted, "The entire cost of building the hotel is estimated at more than \$9,300,000." The massive price tag would top \$140 million today.

The venture was a brave one. While thousands of passengers arrived in New

York City every day across the street at Pennsylvania Station, the massive Hotel Pennsylvania had operated a block to the north since 1919-the largest in the world at the time. Like it, the proposed Hotel Governor Clinton would have an underground passage to the train station.

The architectural firm of Murgatroyd & Ogden was



THE TRAVELER

Monthly publication of the Gulf Coast Model 'A' Club - Southern Alabama to the Florida Panhandle



awarded the commission to design the 31-story structure. George B. Post & Sons was brought in as “consultants.” Their striking design was a romantic melding of Romanesque and Northern Italianate styles. Construction took “a year and a day,” according to The New York Times. Shops lined the ground floor, directly below high arched windows flanked by large bronze lanterns. At the third floor corners, charming Juliette balconies clung to the facade. Inside were 1,200 rooms, “all with baths.”

The hotel was named for George Clinton, the first Governor of New York State and Vice President of the United States under Presidents Thomas Jefferson and James Madison. It was designed, according to an announcement, to accommodate “the traveling public and the mercantile center of which it is a part.” The hotel opened on August

19, 1929. The New York Times reported that from the 20th to 30th floors, some suites opened onto “private balconies equipped with awnings and piazza furniture.”

The two-story main lobby was outfitted with French limestone pilasters, “supporting a gold and colored decorative paneled plaster ceiling, these panels being recalled in the terrazzo floor,” said by The Architectural Forum in February 1930. On the ground floor were the Grill Room with a dance floor, and a coffee shop.

Nearly two weeks later a dinner in the Governor’s Room formally marked the opening. Among the guests that evening were Governor Franklin D. Roosevelt, former Governor Alfred E. Smith, and Mayor James J. Walker.

Somewhat surprisingly, on August 20, 1929, the day after its opening, the owners of the Governor Clinton announced, “Additional land has been



purchased and plans for an 800-room addition, with frontage to Thirtieth Street, is to be erected shortly.” The plans by Murgatroyd & Ogden had been filed five months earlier. In March 1929 the owners said the extension “will conform in height and architectural design to the



Charles Ray



Lilian Bond



Ted Barron



THE TRAVELER

Monthly publication of the Gulf Coast Model 'A' Club - Southern Alabama to the Florida Panhandle



thirty-one-story structure now being completed.”

In 1930 Charles Ray, a film star, and Lillian Bond, a musical comedy star, play checkers on the new giant rooftop board on the Hotel Governor Clinton. Ted Barron, a Tin Pan Alley composer, is the referee.

Charles Edgar Ray (March 15, 1891 – November 23, 1943) was an American actor, director, producer, and screenwriter. Ray rose to fame during the mid-1910s portraying young, wholesome

hicks in silent comedy films.

Lilian Bond (January 18, 1908 – January 25, 1991) was an English-American actress based in the United States.

Surprisingly for such a prolific composer all that can presently (June 2019) be gleaned from sheet music covers and by internet searching is that Ted S. Barron has 67 works published between 1902 and 1919.

Of ragtime interest is The Original Blues (1914) published by Metropolis Music Company, New York, USA.



Check out the New MAFCA website!




Contact ▾ Join/Renew Store Members Only ▾



Committed To The Restoration, Preservation, and Enjoyment of the Ford Model A

Home ▾ Chapters ▾ Classifieds Calendar Committees ▾ Publications ▾ News ▾ Videos "A" Of The Day ▾ 🔍



Welcome to MAFCA!

The Model A Ford Club of America, Inc. (MAFCA) is committed to the restoration, preservation, and enjoyment of Ford Model A and AA cars and trucks, produced between 1928 and 1931. We are an active, family-oriented organization with members who share a deep enthusiasm for these historic vehicles.

As a non-profit corporation, MAFCA boasts over 10,000 members and has over 250 local chapters worldwide.

[JOIN OR RENEW TODAY!](#)

Join Us In the 21st Century

www.gulfcoastmodelclub.net

Gulf Coast Model A Club



THE TRAVELER

Monthly publication of the Gulf Coast Model 'A' Club - Southern Alabama to the Florida Panhandle





Gulf Coast Model A Club SWAP MEET

Saturday June 28 8:00 am - 3:00 pm

Join fellow enthusiasts to buy sell & trade at the home of
Model A Ford Vintage Parts
2206 La Vista Ave Pensacola FL 32504

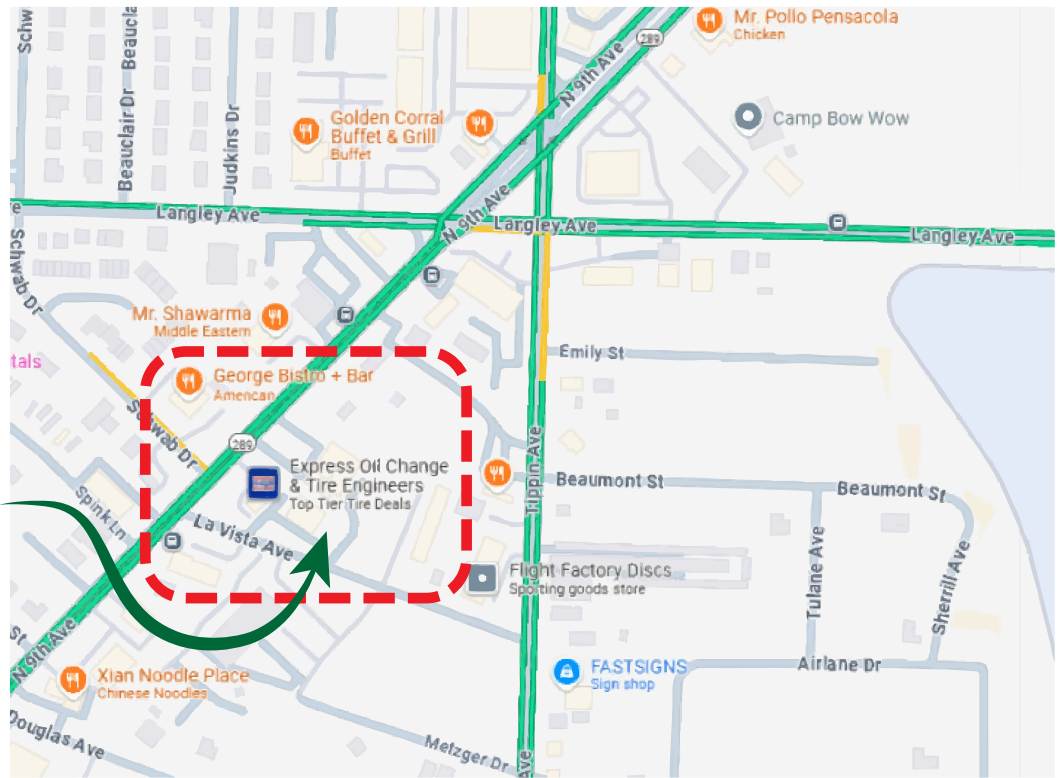
For more information contact:

Ricky Stokes
850-712-4486
crstokes21@gmail.com

Allen Braddy
678-499-3370
alnbraddy@yahoo.com

Event Site
Model A Ford Vintage Parts
2206 La Vista Ave
Pensacola FL 32504

Concessions Available:
Hot dogs
Hamburger
Chips & Cold drinks



Vendor Registration \$25

Due by 04/30/2025 * Make checks payable to Gulf Coast Model A Club
Email to alnbraddy@yahoo.com or mail to 2206 La Vista Ave Pensacola FL 32504

Name _____

Address _____

Phone _____

Email _____

Signature _____